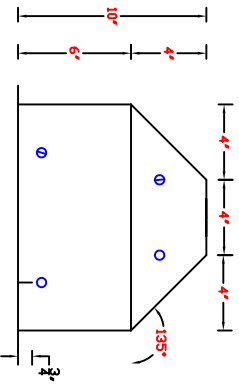
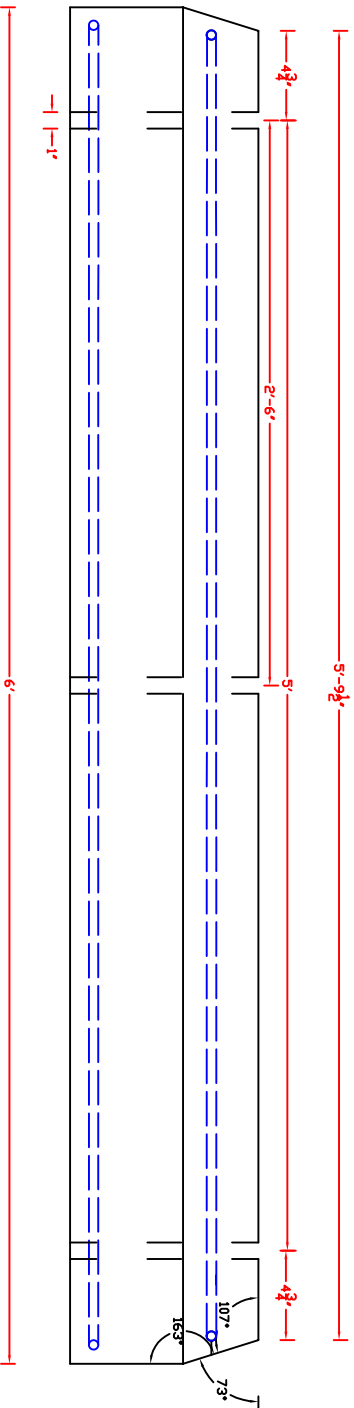


Product Code 6TRLLP
 6' TRUCK STOP
 Camp Logan Cement Works Inc.
 www.camplogancement.com
 800-445-9062
 clew@camplogancement.com



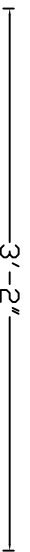
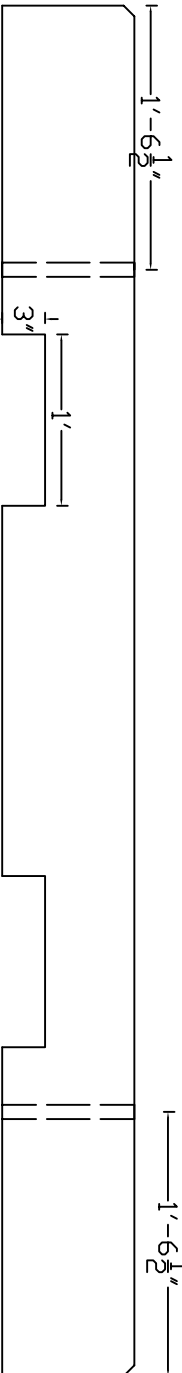
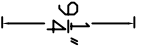
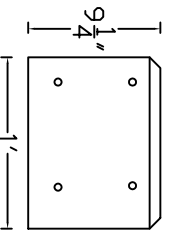
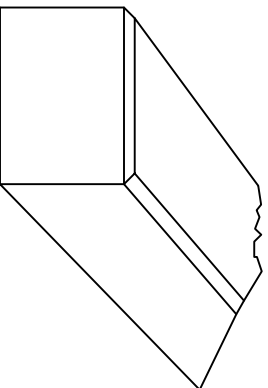
MATERIALS
 - 5000 psi concrete @ 28 days
 - Cement type II portland
 - Aggregate per concrete analysis in accordance with ASTM C136. (Mix of fines and coarse)
 - Reinforcing Bars ASTM A 615, Grade 60, deformed.
 ANCHORING SYSTEM
 - #15 Rebar (no grade) 12" long, hammer through holes in curbs and penetrate concrete / asphalt service.



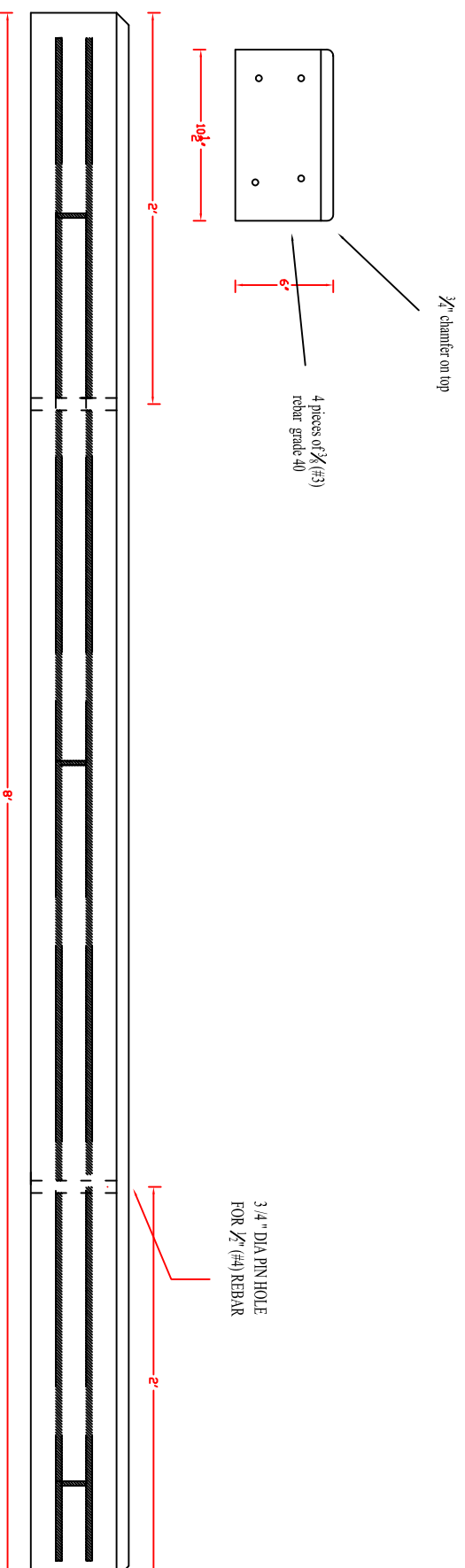
PRODUCT CODE: STRLP
8" TRUCK STOP
Camp Logan Cement Works
www.camplogancement.com
800-445-9062
clcw@camplogancement.com

MATERIALS

- 5000 psi concrete @ 28 days
 - Cement: Type II portland
 - Aggregate: Report sieve analysis in accordance with ASTM C136. (Mix of fines and course)
 - Reinforcing Bars: ASTM A 615, Grade 40, deformed.
- ANCHORING SYSTEM**
- #5 Rebar (no grade) 12" long, hammer through holes in carstop and penetrate concrete / asphalt service.



Product Code 8CSLS
96" x 10 1/2" x 6" Square Industrial Stop
CAMP LOGAN CEMENT
www.camplogancement.com
800-445-9062
clcw@camplogancement.com



- Concrete Materials and Properties: Comply with requirements in Division 3 Section "Cast-in-Place Concrete" for normal-weight, ready-mixed concrete with a minimum 28-day compressive strength of 4000 psi concrete @ 28 days
- Reinforcing Bars: ASTM A 615, Grade 40, deformed.
- Aggregate: Report sieve analysis in accordance with ASTM C13
- weight 500 lbs