

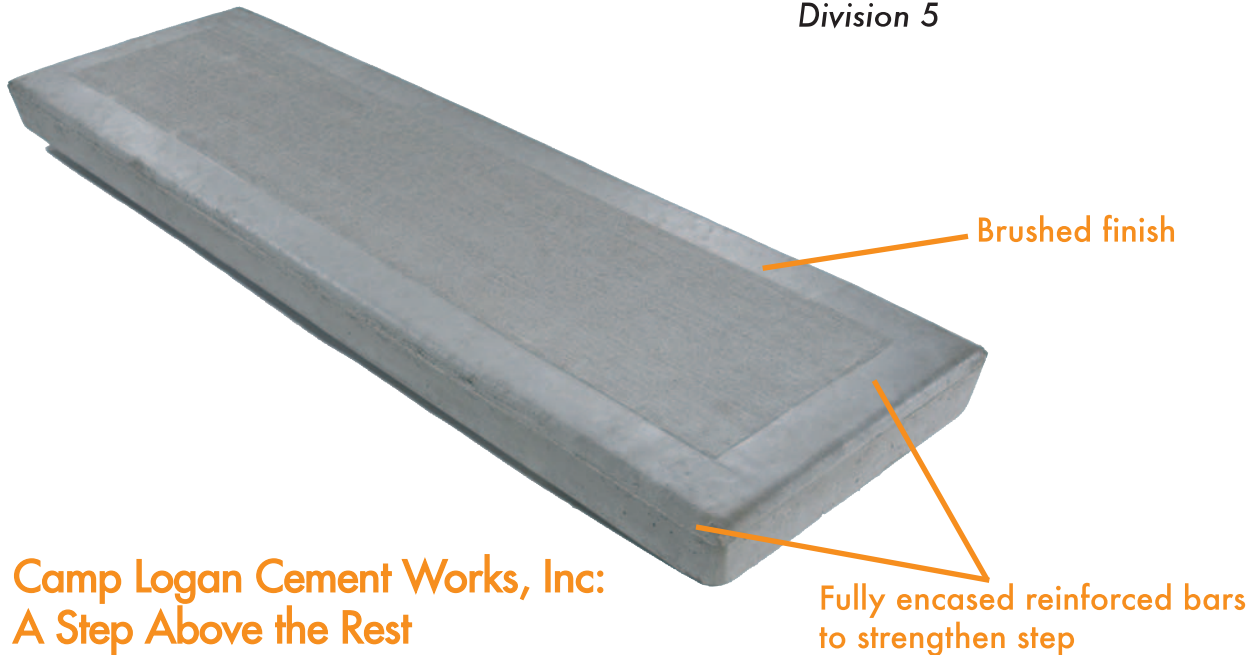


# CAMP LOGAN

Cement Works, Inc.

[www.camplogancement.com](http://www.camplogancement.com)

Precast Concrete Step Treads  
Division 5



## Camp Logan Cement Works, Inc: A Step Above the Rest

### Quality. Durability. Affordability. Strength.

These features make Camp Logan Cement Works precast step treads an obvious choice for builders, architects and fabricators. A leader in the industry for more than 50 years, CLCW produces a variety of steps to meet your specific needs. Our precast cement steps fit both wood and steel stringers. We offer bolt-on and weld-on precast step treads. The Closed-Riser System and the Open-Riser System provide the flexibility to achieve the desired look without compromising safety or cost-effectiveness.



## APPLICATIONS

All types of multi-housing projects including:

- Highrises
- Motels and hotels
- Parking garages
- Office buildings
- New Homes

*Left: Closed Riser System  
Right: Open Riser System*

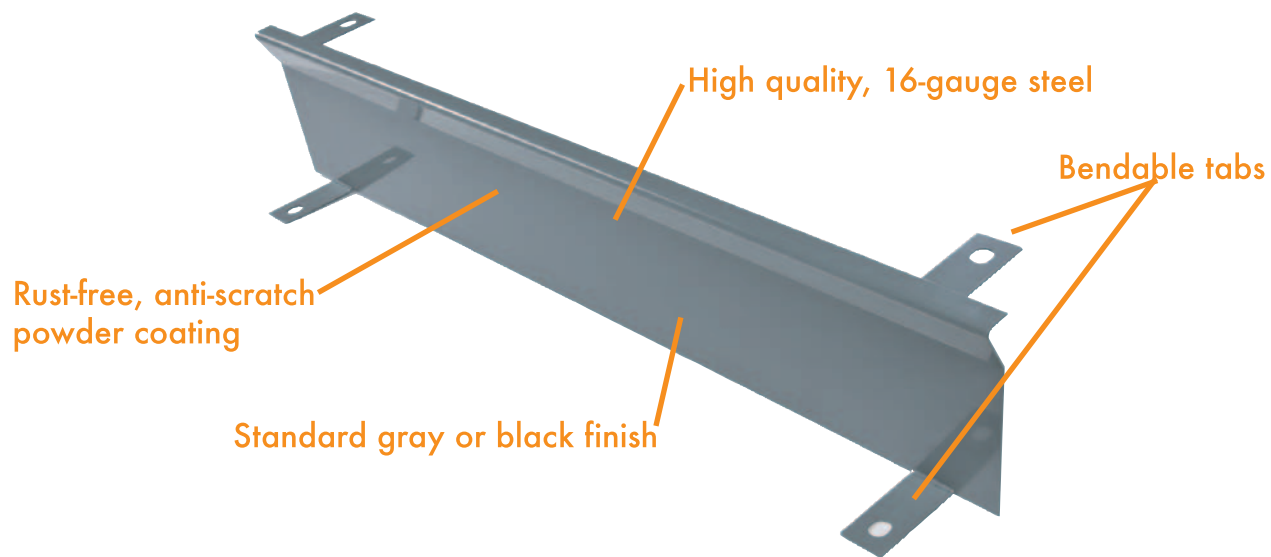


## CLCW Open Riser System for Step Treads

Camp Logan's Closed Riser System uses any of our precast step treads to create a flush, closed-in design. The attachments are subjected to a thorough cleaning and zinc-phosphate pretreatment. And they undergo an extensive and proven multi-step powder coating process, including a polyester powder coating that provides a beautiful, scratch and scuff resistant, rust-free surface.

- Lightweight design
- Helps save and manage operating costs
- Reduces transportation, lessening environmental impact
- Easy to install because of innovative design

### Closed Riser attachment

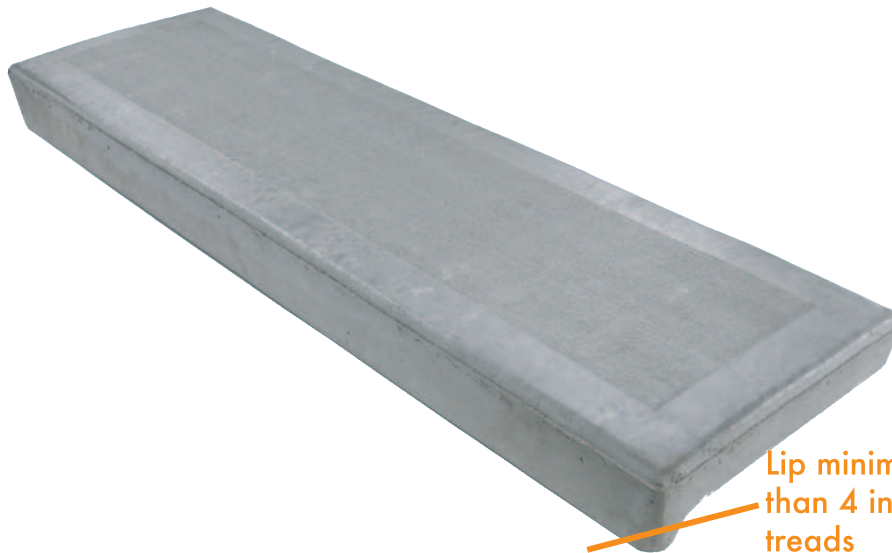


*left: Step treads can be tinted to blend into a uniformed look, matching the gray finish  
above: Back side attachment*

## CLCW Open Riser System for Step Treads

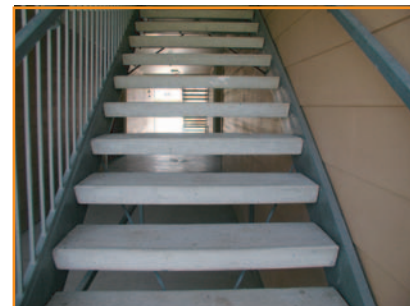
Camp Logan's Open Riser System for Step Treads allows for flexibility, giving you the option to choose from standard sizes and thicknesses, creating stairways with a customized clean, open and airy look, without compromising safety.

### Lip-tread option



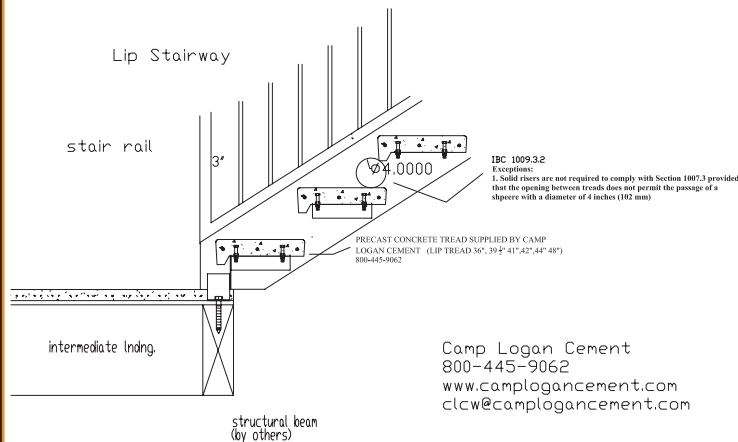
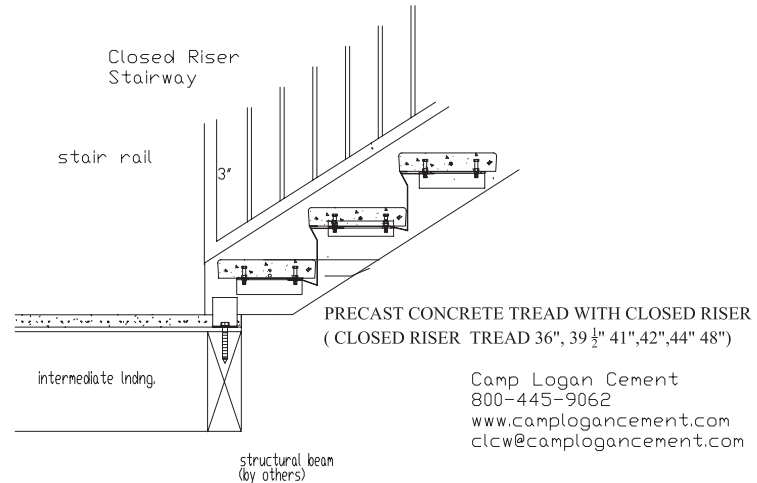
Lip minimizes gap to less than 4 inches between treads

- Creates a clean, open and airy look for a stairway
- Alternative to a closed-in look
- Option of using steps with a 2 1/4" or 3" thickness or Camp Logan's
- Exclusive lip-tread option, that reduces gap between steps to less than 4"
- Lip design hides connection points of the tread
- Ready for traffic - no waiting for poured concrete to dry
- Quick and easy to install



## Why Precast

- Quick and easy to install and replace
- Completely safe, strong and reinforced with #3 rebar
- Will not rust or rot because there is no pan
- Ready for traffic - no waiting for poured concrete to dry
- Engineered to maintain structural integrity
- Steps uphold their look and finish



Since 1952, Camp Logan precast step treads have been installed on projects in more than 30 states.

Our in-house, comprehensive manufacturing capabilities enable us to maintain a large inventory, thereby ensuring a quick delivery. In addition, we will work with architects on custom colors and sizes.

And, Camp Logan Cement Works provides one of the strongest warranties in the industry for our step treads.



**CAMP LOGAN**  
**Cement Works, Inc.**

P.O. Box 70126  
Houston, TEXAS 77270-0126  
(713) 869-3385  
(800) 445-9062

Since 1923